



Doors Open Rideau Lakes ITINERARY



August 16 and 17, 2025

Explore fascinating sites throughout Rideau Lakes – *free!*

South Elmsley



Rideau Lakes



WOOD MAUSOLEUM

229 COUNTY ROAD 29

This cemetery in Rideau Lakes features a beautiful stone mausoleum, with intricate cast-iron gates, dating to 1895. It was the private entombment site of Alexander Wood, co-founder of the Frost and Wood Farm Machinery Company. Learn the fascinating story of the Wood family, along with the history of this intriguing gravesite and tomb, which has recently been restored. Get a rare glimpse inside the mausoleum!

- Ted and Marion Outerbridge, internationally acclaimed illusionists and stewards of The Keyhole House, will provide a talk on site at 10 a.m. Saturday and Sunday, as well as 2 p.m. on Sunday diving into the story of Agnes Lamb and the Wood Family.
- Outdoor event; please bring a chair and waterbottle if desired.*



REVOLVE FARMS

SATURDAY ONLY!
4 MORAN ROAD,
LOMBARDY

While the original log home was built in the mid-1800s, the barn burned down and was rebuilt by the community, with the foundation salvaged and the stones used to construct today's farmhouse. The homestead has been farmed organically for 50-plus years. You can even stay here at this unique farm-to-table site — complete with a Le Cordon Bleu-trained chef!

- Farm open house on Saturday, Aug. 16 only.
- This is your invitation to explore the grounds self-guided, inside the authentic log bed and breakfast, and stunning timber-framed event space.
- Stroll with the heritage chickens, learn about the gardens and growing practices, and visit the farm stand!



MCKINNEY HOUSE

EXTERIOR ONLY!
798 HIGHWAY 15,
LOMBARDY

William McKinney, a prosperous local farmer and blacksmith, purchased this land (originally granted to American General Benedict Arnold) and built this elegant home in 1856. Once a stagecoach stop, the home and gardens are now undergoing careful restoration guided by heritage conservation principles.

- Exterior only, grounds and gardens.
- Enjoy this rare chance to see a historical home mid-rehabilitation, learn about the process and ask questions!
- Guided tours of the property with many historical aspects to learn about.

INTRIGUED? LEARN MORE ABOUT THE EVENT: WWW.DOORSOPENONTARIO.ON.CA/RIDEAULAKES

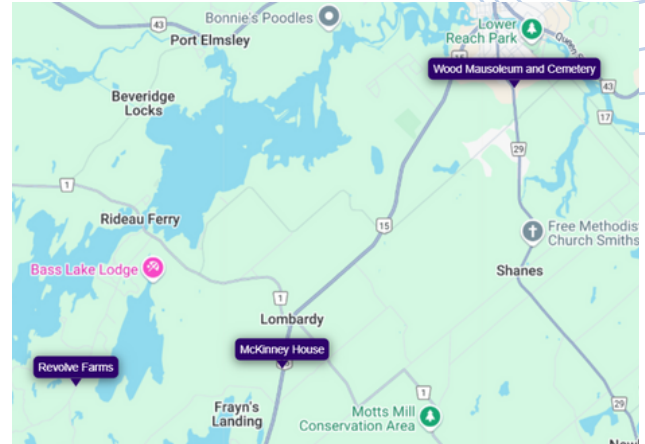
Doors Open Rideau Lakes

ITINERARY August 16 and 17, 2025

Page 2: South Elmsley continued

If you're in the South Elmsley area also...

- Stock up on home grown, fresh produce at Miller's Bay Farm, a fourth-generation family farm for more than 100 years.
- Kids! Visit the new Pump Track and walking trail sign boards at the Ronald E. Holman Municipal Complex.
- Get lost in a book and discover the Maker's Space at the South Elmsley Branch of the Rideau Lakes Public Library on Saturday morning.
- Walk or bike on the Cataraqui Trail.
- Take a gander at the Lombardy Fairgrounds with the orange roof that has been a fair site for more than a century!



Portland and Freeland



SAMUEL POOLE HOUSE

EXTERIOR ONLY!
3909 FREELAND
ROAD

Reflecting the agricultural prosperity of the 1850s, this restored farmhouse replaces an earlier log home, retaining its heritage charm with traditional-style six-over-six windows, returned eaves and a sweeping veranda. Exceptional gardens are featured alongside an original bank barn and outbuildings that display the agricultural roots of the property: once containing a cheese factory, tenant house and blacksmith shop.

- Tour the grounds and learn first-hand
- See a display about Daffodil Days in Rideau Lakes
- Garden party atmosphere with cheese samples served and sparkling cider.

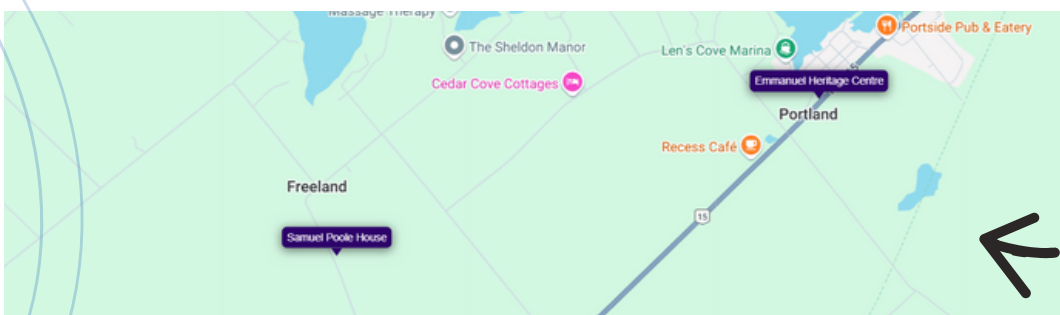


EMMANUEL HERITAGE CENTRE

2767 HIGHWAY 15,
PORTLAND

Overlooking the village of Portland and Big Rideau Lake is the Emmanuel Heritage Centre (1861), a former Anglican church. Its beauty lies in its simplicity — constructed in the Gothic revival style with sandstone quarried onsite, featuring unusual stone buttresses. Owned by the Portland on the Rideau Historical Society, the impressive interior hosts Portland historical memorabilia, musical events and seasonal markets.

- Look for heritage boats on display
- Self-guided interior tours of this impressive church with handsome stained glass, Portland nostalgia and knowledgeable volunteers with stories to tell!



Doors Open Rideau Lakes

ITINERARY August 16 and 17, 2025

Page 3: Portland and Freeland continued

If you're in the Portland area, also...



- Did you know? Admiral Kingsmill, the founder of the Canadian Navy, is buried just outside of Portland! See his gravesite at the Emmanuel Anglican Cemetery and learn about his contributions at a waterfront heritage plaque in Hanna Park.
- Visit the Portland waterfront at the beach or picnic under the gazebo.
- Explore the new Rideau Lakes Public Library Portland Branch - drop in to watch the Portland heritage documentary on Saturday afternoon in the library meeting room.
- Grab a bite to eat at The Galley to see the boat bar as a tribute to heritage boat building in Portland, at the Portside Pub & Eatery, or at the Recess Cafe in a repurposed school dating to the 1960s.
- Visit the historic and lively Crosby Flea Market on Saturday morning with vintage stalls!

Elgin and Morton



RED BRICK SCHOOL

3 HALLADAY STREET,
ELGIN

Step back in time at Elgin's Red Brick School. Visit an authentic 1900 heritage classroom at this restored schoolhouse. Explore educational stories and artifacts while appreciating the yellow brick detailing, grand windows and bell tower. Marvel at exhibits showcasing the remastered historical photography of Clifford Pennock and the new "Historic Rideau Canal" display featuring photos from the first 100 years.

- Join in a *Heritage Walking Tour of Elgin* on Saturday at 10 a.m. and Sunday at 2 p.m.! Featuring interpretation of sites throughout the village, visitors on the walking tour get special access to St. Columbanus Catholic Church and Elgin United Church! Please bring a water bottle, sunscreen, and wear comfortable attire.



THE TIPPED SHIP

3 MAIN STREET,
ELGIN

Come and explore this stunning landmark! Built in 1893 by John R. Dargavel as a general store and family home, this three-storey brick building boasts large display windows, original woodwork, high ceilings and charming attic dormers. Once home to hardware, fine china and a telegraph office — later to antiques — The Tipped Ship now anchors Elgin's main corner as a one-of-a-kind emporium.

- Go behind the scenes on guided tours to explore the upper floors of this historic building which has been a cornerstone of commercial Elgin for more than 130 years!



MORTON HALL

13 JUDD STREET,
MORTON

This charming community hall, constructed in 1929, was funded by the Morton Women's Institute. It retains many original interior details, including its heritage hardwood floors, the ceiling and the original stage. This once-popular dance location throughout the mid-1900s continues to be active today with coffee hours, fitness and dancing. Come and see why this site remains popular with the community!

- Join in a guided walk on the Morton Trail at 11 a.m. both days to view the mill ruins and learn about Morton's history.

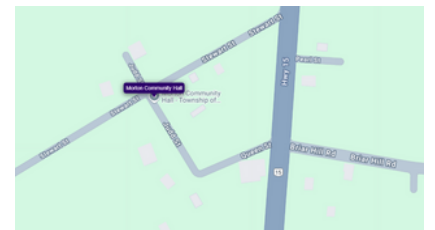
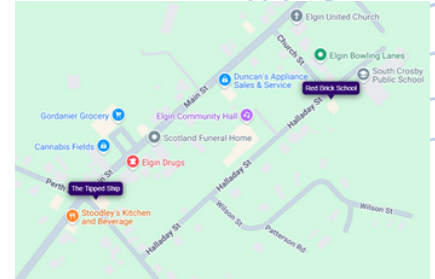
Doors Open Rideau Lakes

ITINERARY August 16 and 17, 2025

Page 4: Elgin and Morton continued

If you're in the Elgin and Morton area also...

- Tour down to the Jones Falls Lockstation to look at the impressive series of locks on the UNESCO World Heritage Site Rideau Canal, view the marvelous Stone Arch Dam, and have a bite to eat at Hotel Kenney Rideau with an unforgettable view!
- Slow down at Wendy's Country Market with an ice cream cone or some local products in a heritage schoolhouse, before hiking Rock Dunder!
- Read the heritage plaques around the village of Elgin.
- Take part in old fashioned fun with roller skating at the rink on Friday evening, or go bowling at Elgin's vintage five-pin bowling alley!
- Stop into The Barn at Elgin to see a repurposed barn and original furniture restoration.
- Enjoy live music and good eats on Stoodley's patio, once the site of the Empire Hotel.



Chaffey's Lock



LOCKMASTER'S HOUSE MUSEUM

1724 CHAFFEY'S LOCK ROAD

Constructed along the historical Rideau Canal, this house was originally a one-storey limestone building. Renovations in 1894 included a second storey and kitchen. The house was occupied by the lockmasters' families continuously until 1967. It was always bustling with the only local telephone and post office. The museum opened in 1982 after community organizations rallied together to save the house.

- Self-guided tours of the museum
- See the Rideau Canal lock in operation!
- Enjoy a special textile exhibit at the Lockmaster's House Museum



CHAFFEY'S LOCKS COMMUNITY HALL

1661 CHAFFEY'S LOCK ROAD

This heritage hall opened in 1932, coinciding with the centennial celebrations of the opening of the Rideau Canal. The Chaffey's Lock Women's Institute built the hall on money raised through dances, raffles, bake sales and through the generosity of local and summer residents.

- During Doors Open, view a special large photo display on loan from the Elgin and Area Heritage Society! Self guided and guided tours available.



QUEEN'S UNIVERSITY BIOLOGICAL STATION

280 QUEEN'S UNIVERSITY ROAD, CHAFFEY'S LOCK

SITE ONLY OPEN FOR FIELD WALK ON SATURDAY - MUST REGISTER TO ATTEND!

The Queen's University Biological Station is celebrating 80 years! Established in 1945, it is now among the top scientific field stations in Canada. It encompasses 3,240 hectares (8,000 acres) of flora, fauna and habitat for leading-edge research and field courses.

- Exclusive to Doors Open Rideau Lakes, take a special field walk from 10 a.m. to noon on Saturday, August 16 only. Dress for the weather and ticks: long pants tucked into socks, sunscreen, water bottle and insect repellent recommended. Space is limited - reserve your spot now online here.

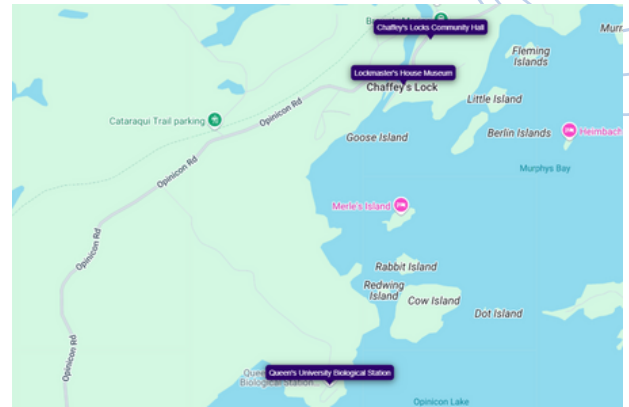
Doors Open Rideau Lakes

ITINERARY August 16 and 17, 2025

Page 5: Chaffey's Lock and area continued

While you're around Chaffey's Lock...

- Go on an excursion with Rideau Tours - a Canadian Canoe experience in a red canoe with charcuterie!
- Stop into the historic The Opinicon for ice cream or lunch! Walk the pathway to look at the gardens. Get woodfired pizza from the outdoors over and head down to the lock to watch the boats go through the lock.
- Walk up to the historic Iron Bridge on the Cataragui Trail for a special aerial view of the canal, or peek at the Marion Dunn Heritage Trail and Celtic Cross near the hall.
- Stay at Dorothy's Lodge or Simmons Lodge - both heritage accommodations!



Newboro and North Crosby



NEWBORO MANOR

11 NEW STREET,
NEWBORO

Step inside Newboro Manor, a one-of-a-kind 1860s Italianate stone mansion rich in history and charm. Original features include a grand staircase, plasterwork, flooring, windows and exposed stonework. Glittering chandeliers illuminate inspiring artwork and furnishings, both antique and contemporary. Visit the summer kitchen and unwind in the stunning conservatory.

- Stroll the forest walk and experience the spacious grounds;
- Chat with "The Lady of the Manor" welcoming visitors in period costume;
- Visit Stone Manor Studios in the renovated carriage house!



NEWBORO BRANCH, RIDEAU LAKES PUBLIC LIBRARY

10 BROCK STREET,
NEWBORO

This heritage stone library branch, located in the former courthouse, is in one of the oldest buildings in Rideau Lakes. Dating back to before 1850, it has a storied history — having served as a school, a jail, municipal building and community hall.

- See the authentic wooden jail door inside and take your mug shot!
- Be magically transported to the past by stepping into a heritage scene with the library's green screen!



ST. MARY'S ANGLICAN CHURCH

15 BROCK STREET,
NEWBORO

Celebrating its 175th year, this beautiful stone church was constructed in 1850 through the efforts of a dedicated congregation and Benjamin Tett, who purchased the land and paid the workers' wages. Come and see the stunning stained-glass windows — one of which is in Tiffany style — an elegant altar, evidence of boxed pews, golden eagle lectern, rostrum pulpit and incredible woodwork.

Doors Open Rideau Lakes

ITINERARY August 16 and 17, 2025

Page 6: Newboro and North Crosby continued



NEWBORO BLOCKHOUSE

10 BLOCKHOUSE
LANE, NEWBORO

Discover one of only four blockhouses built on the Rideau Canal. This building features thick walls designed to withstand small cannon fire and a tin sheathed roof to defy torching. Situated on a knoll to observe the lock and channel, the blockhouse can hold a 20-man garrison and house the lockmaster. Come and enjoy this rare opportunity to peek inside!

- Step inside to earn from an Indigenous History of Rideau Lakes exhibit at this Pop-Up Museum.
- Experience the first time the Blockhouse has been open to the public in 25 years!



FOLEY MOUNTAIN CONSERVATION AREA

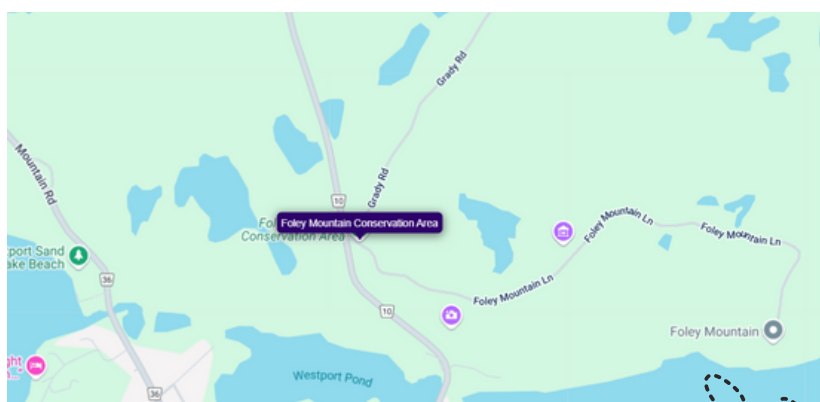
SATURDAY ONLY!
105 FOLEY
MOUNTAIN LANE

Overlooking the Upper Rideau Lake, the Foley Mountain Conservation Area is an exciting natural space — home to the famous Spy Rock Lookout and 10 km (6 miles) of trails through rugged wilderness, mixed forest, ponds and fields. The site, operated by the Rideau Valley Conservation Authority, provides something for the whole family — including swimming, educational facilities and picnic spots.

- Free admission all day on Saturday only.
- Join the free Family Forest School drop-in program from 10 to 11:30 a.m. and an open house in the afternoon.
- Explore and hike! See a beaver lodge, turtles, bask in nature and the stunning view from atop Spy Rock.

While you're in Newboro and the North Crosby area...

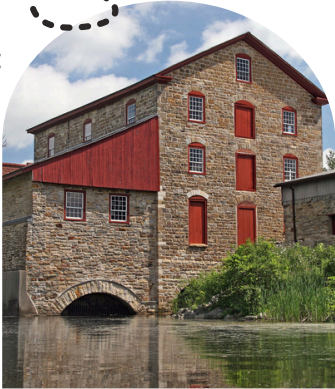
- Stop by the Newboro Soap Company to see an original Lockstation building.
- Visit the provincially recognized Royal Sappers and Miners Cemetery.
- Grab lunch at The Stage Coach or Stirling Lodge - both heritage venues.
- Read the Newboro heritage storyboards to learn more about this vibrant community.
- Stay at The Poplars, a heritage resort!
- Drive by the Salem stone houses.
- See the Big Fish at Norris' Bait and Tackle.
- Visit Little Rideau Farm for famous maple vinegar and order from The Pie Bar for mouth-watering baked goods.
- Enjoy sipping and noshing at Scheuermann Winery.
- Go for a dip at the free Lions Club Beach!



Doors Open Rideau Lakes

ITINERARY August 16 and 17, 2025

Delta and Philippsville



OLD STONE MILL

44 KING STREET,
DELTA

The Old Stone Mill is Ontario's only surviving pre-1812, fully automated stone gristmill. Built of local stone and timber after inventor Oliver Evans' design, it has been revitalized by the Delta Mill Society with authentic equipment and enhanced interpretation. Watch the 200-year-old millstones in action!

- See a milling demonstration at 1 p.m. on Saturday only, grinding heritage Red Fife wheat into flour.
- The Blacksmith Shop will be open from 10 a.m. to 2 p.m. with blacksmiths demonstrating this interesting heritage art on Saturday.
- The Stone Bridge Quilter's group will be displaying some of their best quilts in the Old Stone Mill special to Doors Open on both Saturday and Sunday.



OLD TOWN HALL

8 LOWER BEVERLEY
LAKE PARK ROAD,
DELTA

Delta's Old Town Hall has served the community since 1880 as a courthouse, Masonic lodge, theatre, municipal office, museum and even a jail. The bricks used for construction came from a brickyard in the village. The wooden floors, stage, tin ceiling, mid-room columns and fascinating architecture of this building have witnessed gatherings here for almost 150 years.

- Look for a Maker's Market at the Old Town Hall on Saturday from 10 a.m. to 4 p.m. in the Old Town Hall. Crafters, woodworkers, and more will show how they make their products as well as have the results available for sale. Admission is free!
- On Sunday, Aug. 17 the Rideau Lakes Heritage documentaries by award-winning filmmaker, Allison Margot Smith, will be shown at the Old Town Hall from 10 a.m. to 4 p.m.



PHILIPPSVILLE BAPTIST CHURCH

1407 COUNTY ROAD
8, PHILIPPSVILLE

One of the area's oldest surviving church buildings, this 1865 stone church is now a private residence that has been beautifully restored. Don't miss the beautiful Gothic windows, the wooden front doors with a pointed transom above, the original full-body baptismal font, and the incredible interior woodwork.

- Enjoy this rare chance to step inside with self-guided and guided tours!

While you're in Delta and area...

- Enjoy a coffee, baked goods or delicious lunch at the Bastard Coffee House – located in the historic Jubilee Block. A heritage experience unto itself!
- Go for a swim, ice cream and a trail walk with towering hemlocks at Lower Beverley Lake Park which is almost 60 years old!

