

Protecting the environment you love

Township of Rideau Lakes
Rideau Lakes Lake Association Committee Meeting
February 10, 2022



Rideau Valley
Conservation
Foundation



Mission

The Rideau Valley Conservation Foundation is a registered environmental charity working to help protect and conserve the lands and waters of the valley of the Rideau River in Eastern Ontario.

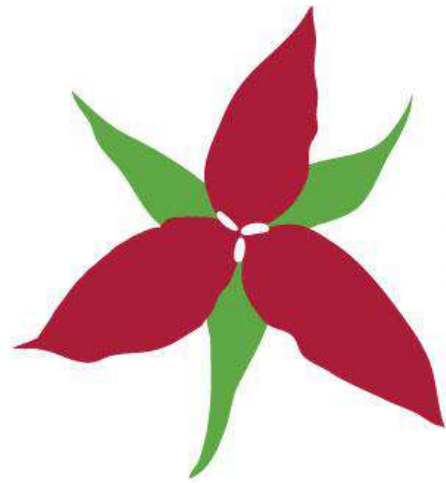


Rideau River Watershed



Guiding Principles

- We attract and inspire philanthropy in response to the unique needs of the Rideau Valley watershed
- We complement and support the work of the Rideau Valley Conservation Authority
- We are wise and prudent stewards of funds
- We value transparency, ethical practice, accountability and are an accredited member of Imagine Canada
- We value and strive to maintain donor confidence and volunteer engagement



Rideau Valley
Conservation
Foundation



Rideau Valley
Conservation
Authority



RVCF Board of Directors

- **Andrew Harkness**, Chair
- **Allison Brown**, Vice Chair
- **Jason W. M. Kelly**, Immediate Past Chair
- **Kathy Dallaire**, Secretary-Treasurer
- **Allison Gibbons**, Director
- **Gary Howard**, Director
- **Tom Scott**, Director
- **Cynthia Wagner**, Director
- **R.E. Smith**, Director
- **Kathy Thomas**, Director
- **Richmond Wilson**, Director

Terms of Reference

The RVCF Board of Directors:



- Oversee, appraise and protect the operations and the assets of the Foundation.
- Ensure that RVCF meets or exceeds all of its legal, financial and ethical obligations.
- Establish goals, principles and policies for the RVCF, consistent with maintaining and improving the health of the watersheds in the Rideau Valley area of jurisdiction.
- Undertake strategic planning and provide the forward thinking required to position the RVCF to deal with related issues and emerging opportunities.
- Use their networks to attract donations of land and to assist in fund-raising.

The Rideau Valley Conservation Foundation has been awarded accreditation from the Imagine Canada's Standards Program. With the accreditation, you can be assured that the RVCF has met the highest standards for charities as designed by Imagine Canada.



Invest in Trust™

IM△GINE
CANADA



Focus Areas

The Foundation raises funds and in-kind gifts for three major areas of conservation work:

Land Care — land protection and conservation, tree planting, erosion control, landowner information, trail building and maintenance, outdoor signage, picnic tables, benches, boardwalks.



Focus Areas

The Foundation raises funds and in-kind gifts for three major areas of conservation work:

Land Care — land protection and conservation, tree planting, erosion control, landowner information, trail building and maintenance, outdoor signage, picnic tables, benches, boardwalks.

River Care — water quality monitoring, biodiversity monitoring, wetland inventories, invasive species and garbage removal, clean water projects.



Focus Areas

The Foundation raises funds and in-kind gifts for three major areas of conservation work:

Land Care — land protection and conservation, tree planting, erosion control, landowner information, trail building and maintenance, outdoor signage, picnic tables, benches, boardwalks.

River Care — water quality monitoring, biodiversity monitoring, wetland inventories, invasive species and garbage removal, clean water projects.

Conservation Education — outdoor learning and experiences, accessible programs and services, onsite landowner visits, research projects, public events.

Fundraising

- Grants
- Programs
- Endowments
- In-kind: Land Donations / Easements





Grants

Project-based funding support from partners including:

- Employment and Social Development Canada
- Ontario Trillium Fund
- Gosling Foundation
- One Tree Planted
- TD Friends of the Environment Foundation

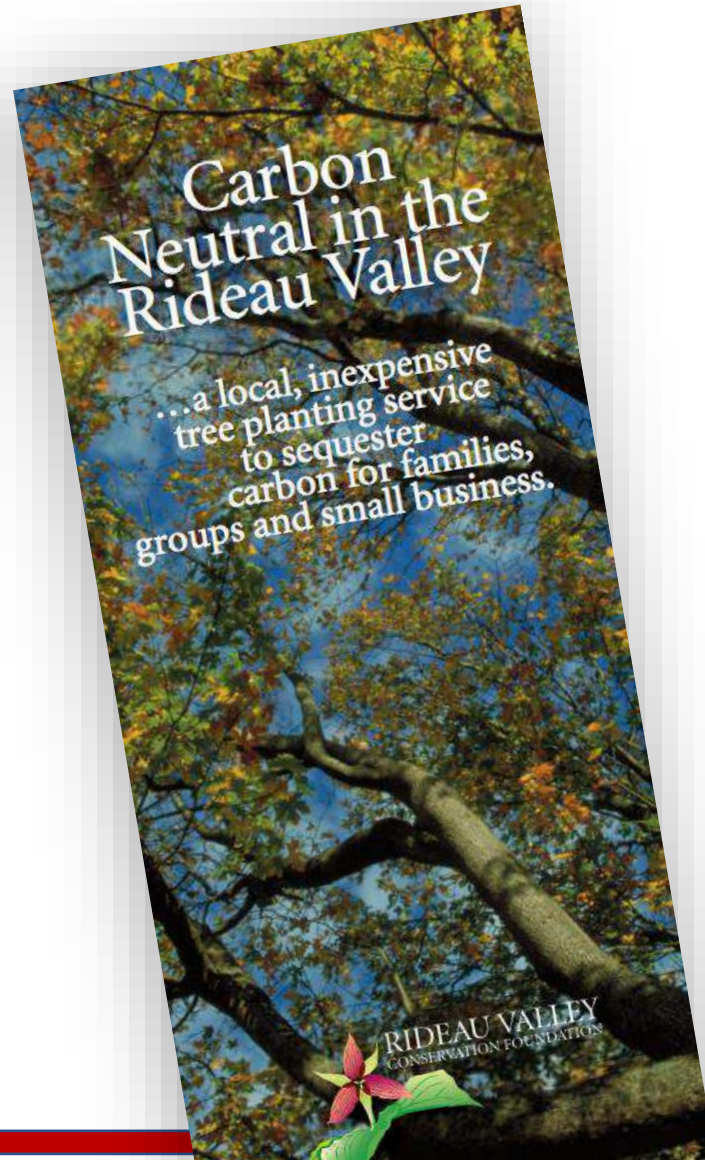






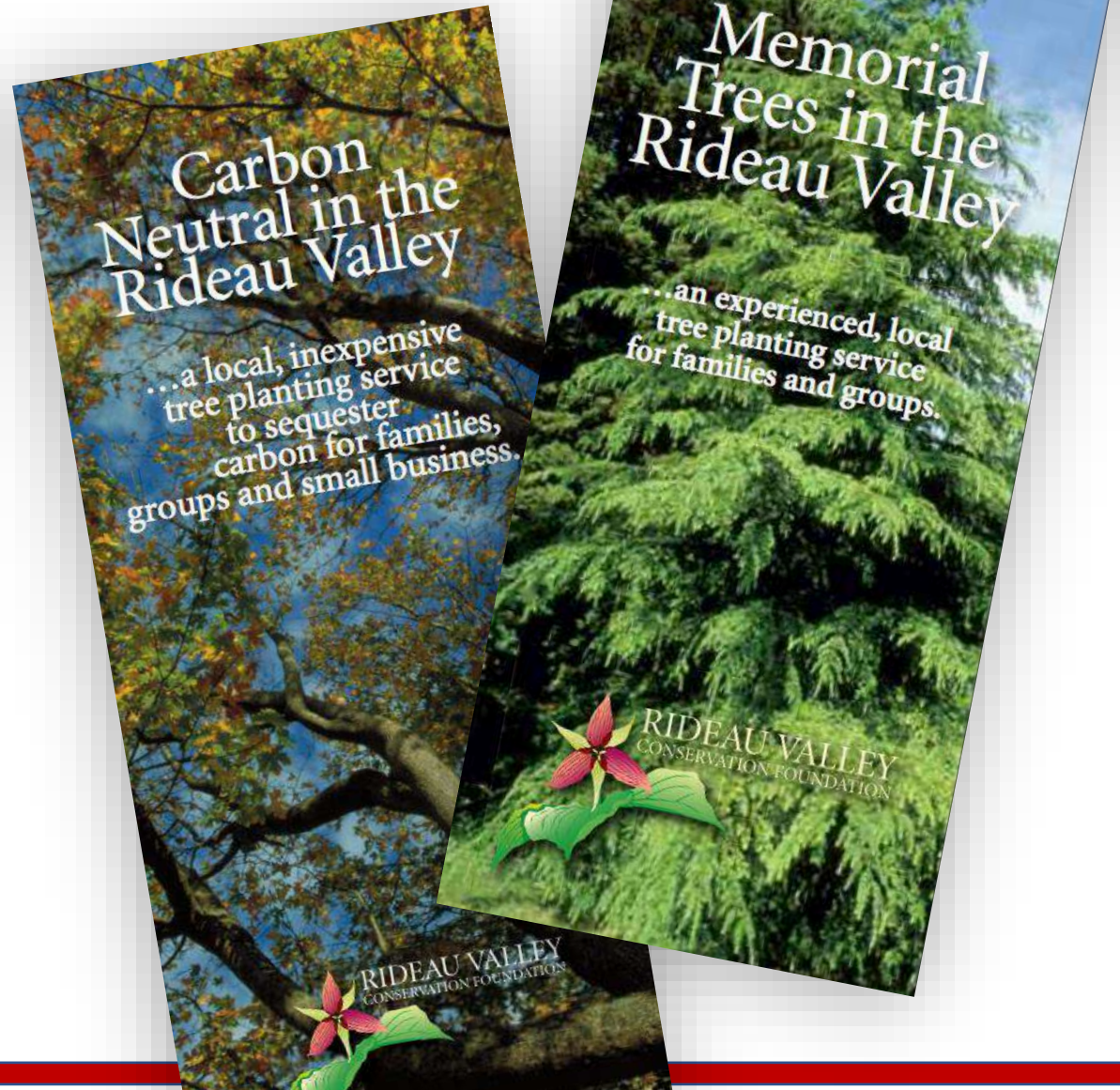
Programs and Services

- Carbon Neutral Program



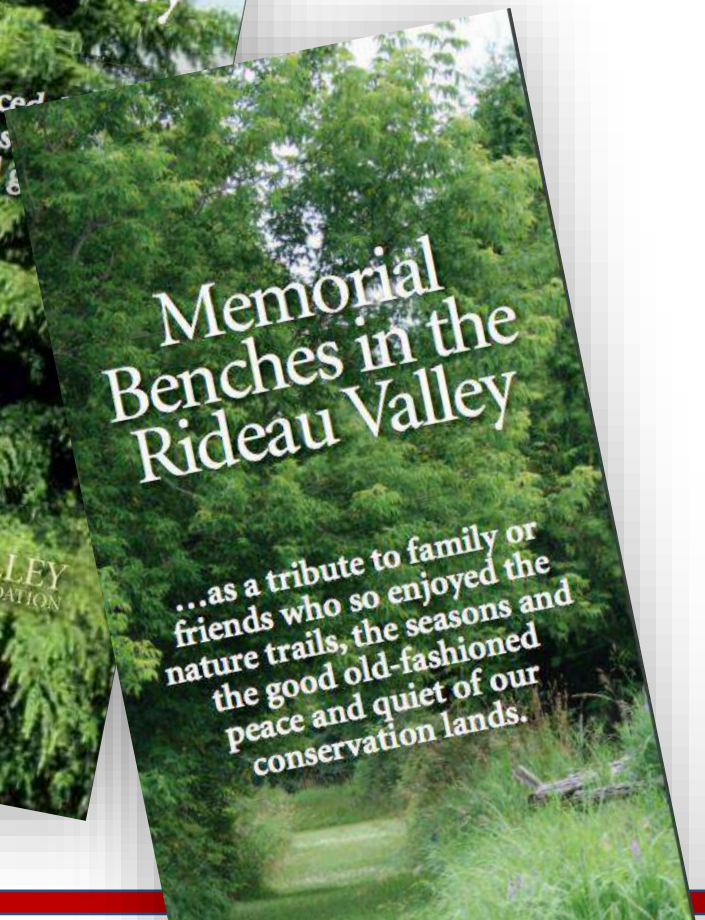
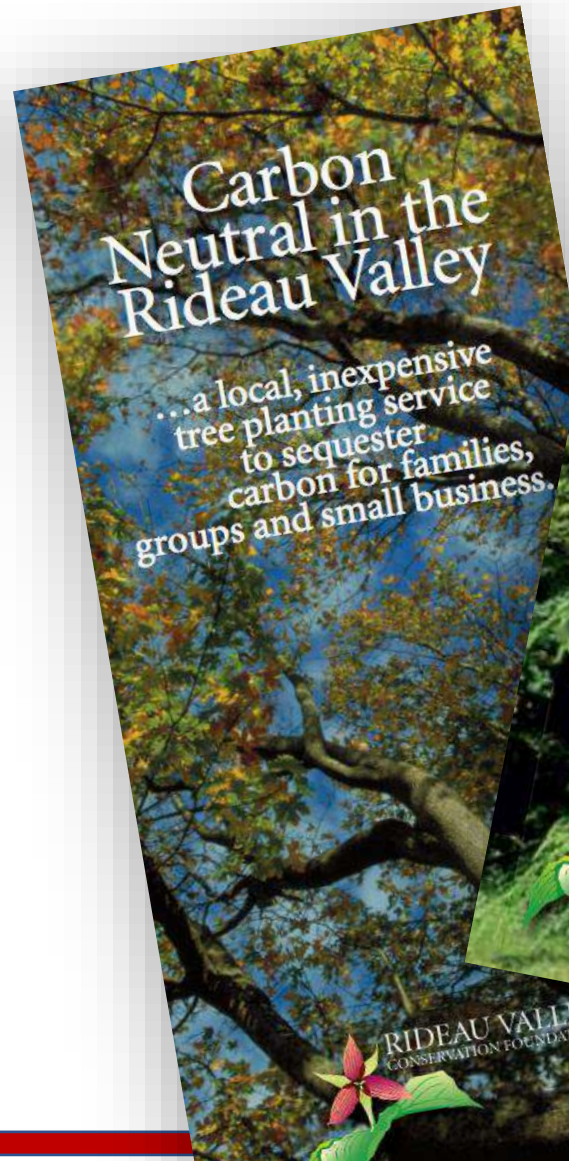
Programs and Services

- Carbon Neutral Program
- Memorial Trees
- Special Occasion Trees



Programs and Services

- Carbon Neutral Program
- Memorial Trees
- Special Occasion Trees
- Memorial Benches



Endowments

Steve Simmering Conservation Lands Endowment Fund

- To provide annual source of funds to care for RVCF and RVCA conservation lands

A group of nine people, including men and women of various ages, are standing in a line behind a white canoe. They are dressed in outdoor gear like hats, sunglasses, and overalls. The setting is a grassy field with trees in the background. The canoe is white with blue and red stripes along its side.

Endowments

Gerald Williams Water Endowment Fund

- To protect water by supporting water quality and water quantity monitoring, surface water and groundwater research, natural shoreline promotion, climate change research

Endowments

Environmental Land Fund

- To cover costs of surveying, land appraisal and legal fees that is needed when environmental land comes into public ownership



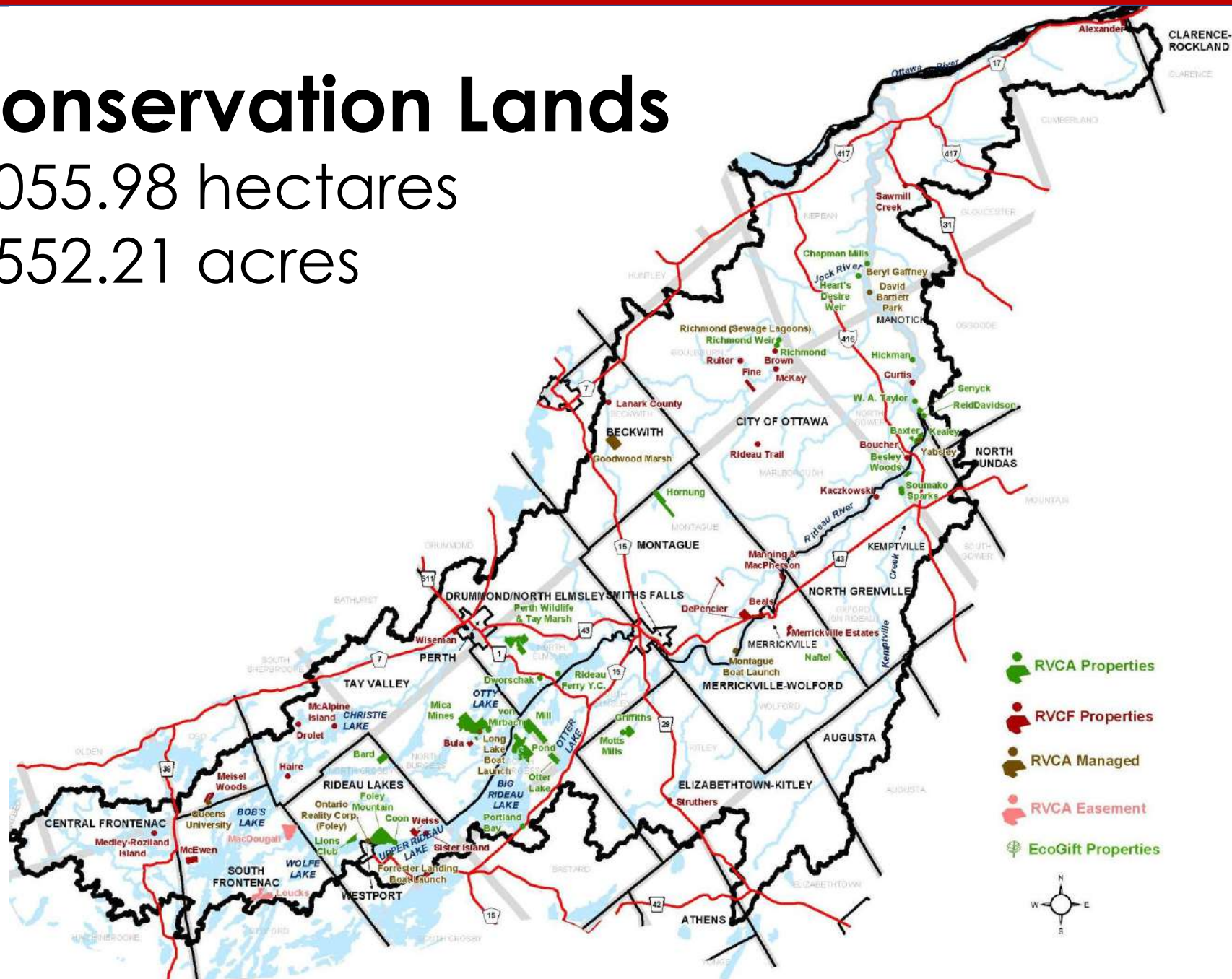


Land Donations

Conservation Lands

3,055.98 hectares

7,552.21 acres



RVCF

26 properties

- 527.37 hectares
- 1,303 acres

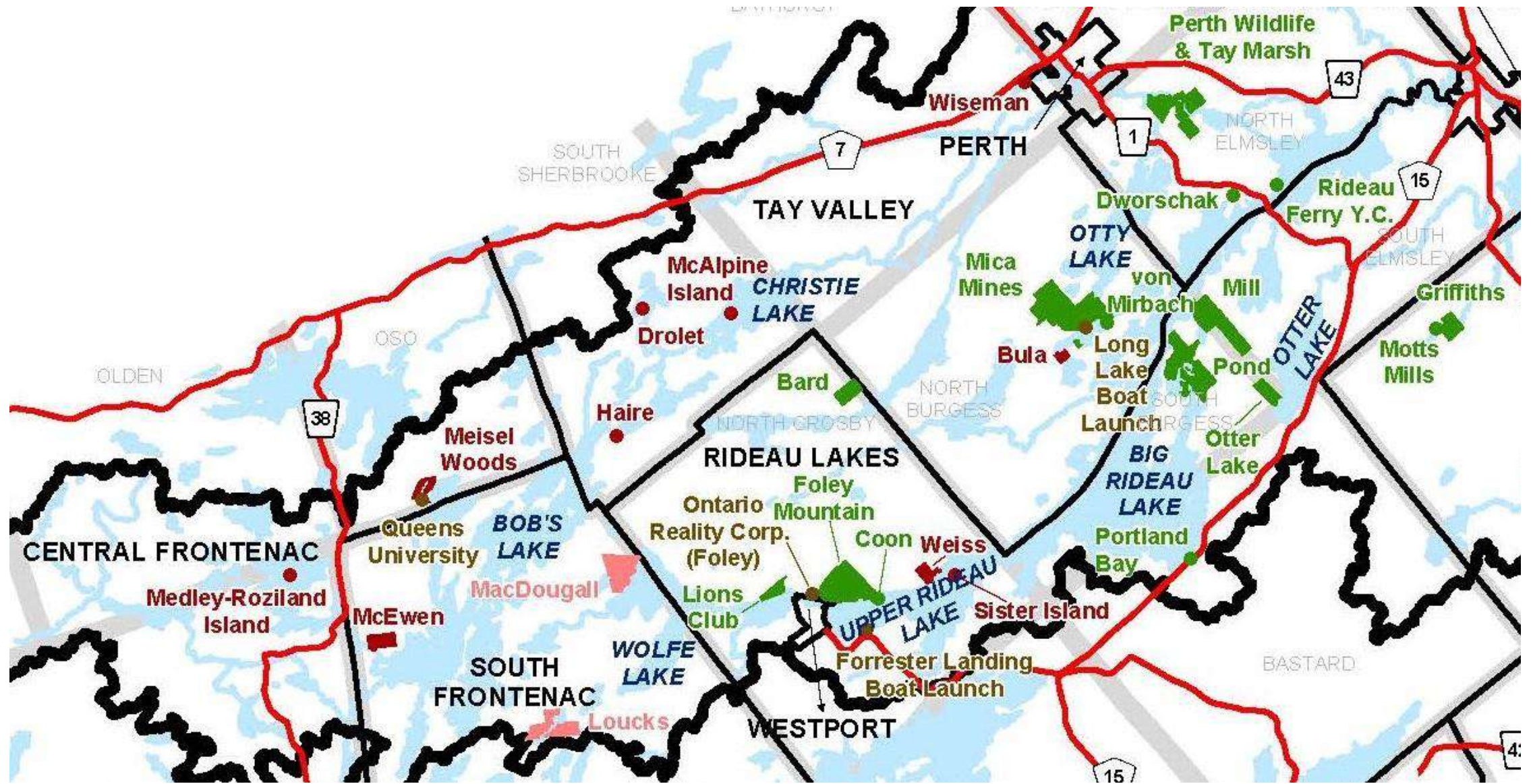
RVCA

28 properties

- 2,210 hectares
- 5,461 acres

RVCF easements

- 318.98 hectares
- 788.21 acres



Your Foundation at work



7.3 million

dollars raised
for conservation
since 1994



6,706

trees planted to
offset carbon through
2021 agreements



846 hectares

protected for
conservation



168 acres

preserved
through new
conservation easement



78

ongoing
species at risk
restoration projects



5 years

as an
accredited member
of Imagine Canada

Learn more:

- www.rvcf.ca
- diane.downey@rvcf.ca
- Facebook
@RideauValleyConservation
Foundation
- Twitter
@RVCFoundation

